



## Datasheet

# ASTRA

## SEMI-AUTONOMOUS



### GENERAL DATA

Input Voltage	100 - 240 VAC	Communication range	-
Battery Operation	190 - 240 VDC	Active time settings	1s-30min
Operating frequency	50 - 60 Hz	Soft light start	Yes
Peak voltage resistance	300 VACrms	Basic light function	Yes
Electronic ballast compatible	No	Basic light settings	0-100%
Material	Al / PC / PE	Daylight control	No
Cooling system	Passiv / 235 W/(mK)	Group parameterization	No
Colour temperature	3000 - 6000 K	Swarm intelligence	No
Colour Consistency (Mac Adam)	3	Remote Access	No
System efficiency *	130 lm/W		
Energy Class	E		
Number of switching cycles	> 500'000		
IP Protection class	IP20		
Protection class	II		
Risk group LED	RG0		
Operating temperature	-20 °C .. +45 °C		
Storage temperature	-20 °C .. +70 °C		
Operating & storage humidity	10 - 80 % rH		
Motion sensor technology	Radar (HF)		
Motion transmission power	< 1mW		
Motion sensor frequency	5.725 - 5.875 GHz		
Motion detection range	10m		
Adjustable detection range	No		
Communication technology	-		
Communication transmission power	-		
Communication frequency	-		



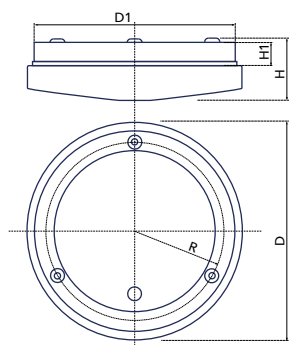
SCAN  
CODE FOR  
PRODUCT  
PAGE

\* Power and luminous flux are subject to initial tolerances of +/- 5%. Unless specified otherwise, they are measured as follows: Colour temperature of 4000K, CRI of <80 and Environmental temperature of 25°C.

## LENGTH DEPENDENT DATA

Nominal Diameter (N)	26 cm	32.5 cm	37.5 cm
Power *	9 W	18 W	25 W
Useful luminous flux *	1170 lm	2340 lm	3250 lm
EAN	7640185682351	7640185681873	7640185681880

## GRAPHICS



### Drawing Information

N	26 cm	32.5 cm	37.5 cm
D	255 mm	325 mm	375 mm
D1	230 mm	300 mm	350 mm
R	104 mm	134 mm	160 mm
H	80 mm	80 mm	80 mm
H1	210 mm	210 mm	210 mm



Measured on a 1.5m Tube/37.5cm Roundlight with 4000K and CRI >80

## CONTACT

LEDCity AG  
Werdstrasse 21  
CH-8004 Zurich  
info@ledcity.io

The products of LEDCity are constantly being further developed. The pictures, drawings and specifications shown here represent the current status at the time of publication of this document and cannot be used as a point of a contract. During the validity of this document we reserve the right to make technical or formal changes to our products.

\* Power and luminous flux are subject to initial tolerances of +/- 5%. Unless specified otherwise, they are measured as follows: Colour temperature of 4000K, CRI of <80 and Environmental temperature of 25°C.